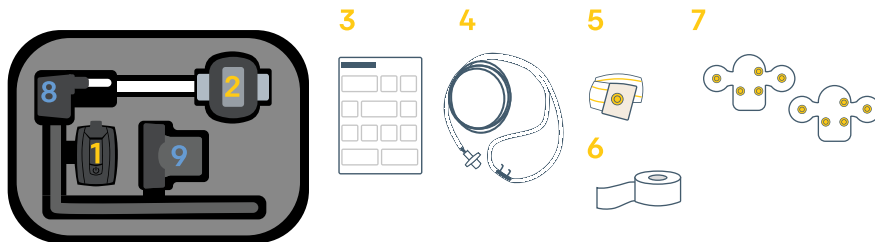


Equipment



Equipment needed in recording:

1. Bittium Respiro™
2. Pulse oximeter
3. Quick Guide/ Notes and Warnings
4. Nasal cannula
5. RIP belt
6. Medical tape
7. Respiro™ Patch for 1 RIP Belt and a spare patch

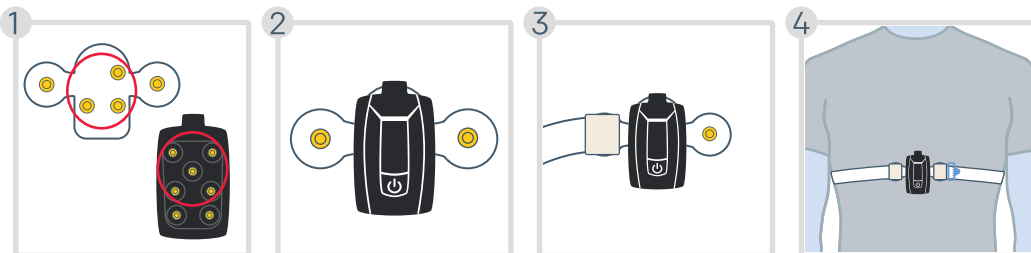
Do not use a broken device or cannula whose packing is opened.

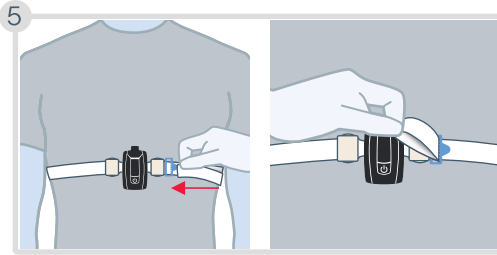
Equipment needed for charging Respiro (if required):

8. Charger
9. Charger dock

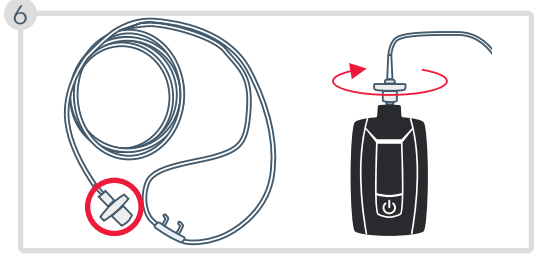
Starting a recording

Attach the device and RIP belt to the patch as shown.

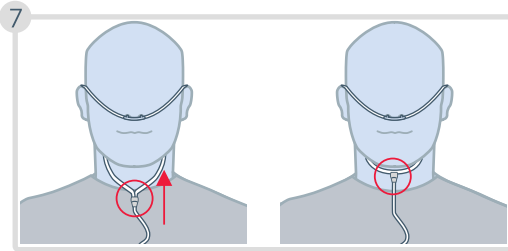




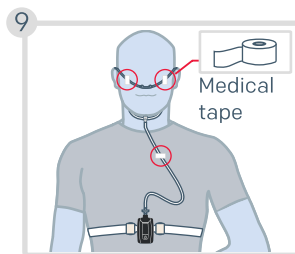
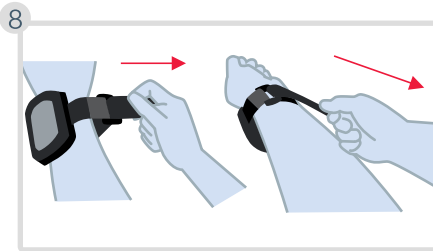
Adjust the belts if they are too loose.



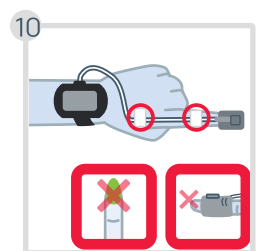
Attach the cannula to Respiro and rotate the connector slightly clockwise until you feel it connect.

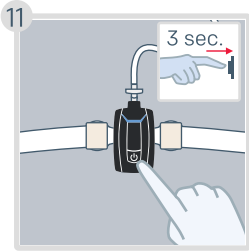


- Move the slider up the tubes to adjust the fit.
- **Choking hazard!** Position the nasal cannula carefully as shown in the figures.
- In case a cannula with a mouthpiece is used, the oral part should be pointed towards your mouth.



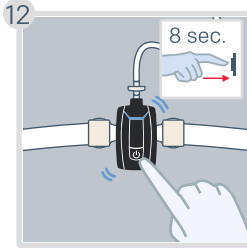
Choking hazard! Use medical tape for securing the cannula.



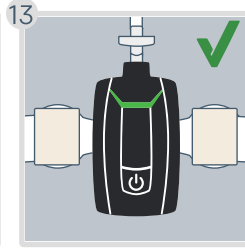


If your recording is set to start automatically, skip the steps 11 and 12.

Press the power button for about 3 seconds until the LED indicators are lit in blue.

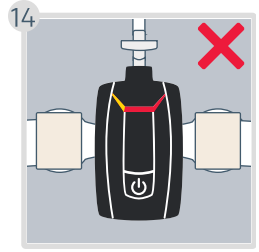


Press the power button again for about 8 seconds until the device vibrates and the LEDs start blinking blue.



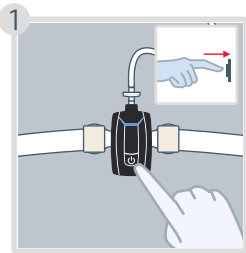
The LEDs are lit in **green** to indicate a successful recording start.

The LEDs will turn off automatically after 30 seconds if everything is OK and you are lying down.



If any LED indicator blinks **red** or **yellow**, check that the item corresponding to the indicator is connected properly. Explanations for the indicators can be found on the **next page**.

During a recording

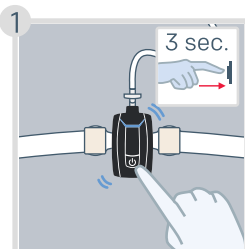


You can shortly press the power button to mark times when you are not sleeping, such as going to bed, going to the bathroom, waking up... (Optional)

Stopping a recording

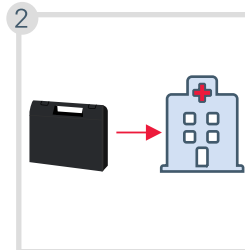
If your recording is set to end automatically, skip the step 1.

Press the power button for about 3 seconds until the device vibrates 3 times and the LED indicators are lit in blue one by one from left to right.



Pulse oximeter turns off automatically in about 10 minutes when you remove the sensor from your finger.

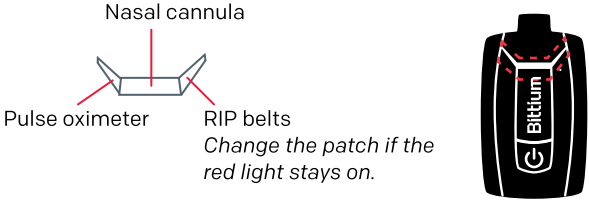

The LED indicators are lit in blue for 5 minutes but you can move to the next step.



Detach the equipment from yourself. Place all the items back into the carry case and return it to the clinic.

LED indicators: Viewed from the front of Respiro

If any LED indicator blinks red or yellow, check that the item corresponding to the indicator is connected properly. Once connections are OK, the LEDs will be lit in green. Contact your healthcare professional if LEDs are lit solid red or there are no lights at all.

 <p>Nasal cannula</p> <p>Pulse oximeter</p> <p>RIP belts</p> <p><i>Change the patch if the red light stays on.</i></p>	<p>Example</p> <p>Nasal cannula: OK</p>  <p>Pulse oximeter: A finger is not inserted into the finger sensor.</p> <p>RIP belts: Error</p>
<p>● Error ● A finger is not inserted into the finger sensor ● OK</p>	

Connect Respiro to an outlet using the charger dock and the charger if you want to see the battery charge level. The LED indicators represent the device battery charge level. If at least two green LED indicators are blinking or all the LEDs are continuously lit, the battery charge is sufficient.

MDR marketing authorization holder in Europe and manufactured for:

Bittium Biosignals Ltd.
Pioneerinkatu 6
70800 Kuopio
Finland



Tel.: +358 40 344 2000
Email: bbs@bittium.com
Web: <https://www.bittium.com>

Bittium