

Bittium MiniSnap™ Sensitive 1-CH ECG Electrode

The Bittium MiniSnap™ Sensitive 1-CH ECG Electrode is intended to be used with the Bittium Faros™ ECG device for the purpose of measuring cardiac signals (ECG).

Equipment



Bittium
Faros™



Bittium
OmegaSnap™
Adapter



Bittium
MiniSnap™
Sensitive
1-CH ECG
Electrode

Caution!

- ▶ Place the electrode onto intact, clean skin only.
- ▶ Do not use body lotion or creams in the electrode area prior to applying the electrode.
- ▶ Do not use outdated electrodes. Please check the date on the packing material.
- ▶ The electrode is for single use only. Reuse of the product may cause contamination, leading to infections.
- ▶ Stop using the Faros ECG device and remove the electrode from the skin if the electrode causes adverse reactions such as skin irritation or rash. If any problems occur, please contact your clinic or person responsible for treatment.
- ▶ Replace the electrode if it does not stick to the skin.
- ▶ Remove the electrode from the skin after measuring.
- ▶ Use the electrode only with the Bittium Faros™ ECG device.
- ▶ The Faros device and OmegaSnap adapter must be cleaned between users. The recommended cleaning method: non-alcoholic cleaning and disinfection wipes for medical devices, for example mikrozid® sensitive wipes or SaniCloth AF3 wipes.
- ▶ Follow these instructions. See more detailed instructions in the Faros manual.

Bittium



Bittium Biosignals Oy
Pioneerinkatu 6
70800 Kuopio, FINLAND

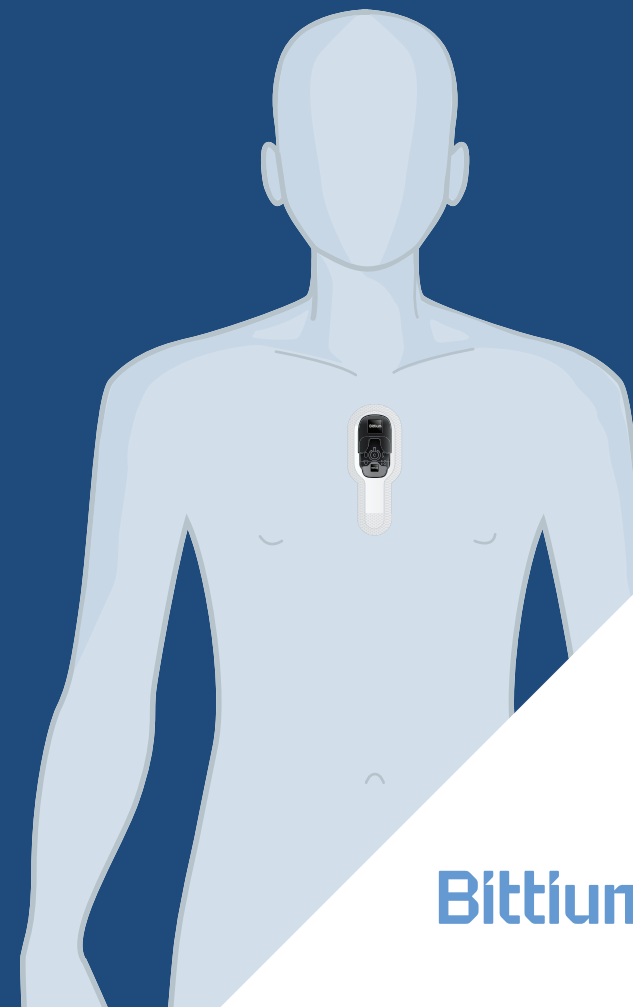


Tel: +358 (0)40 3442000
Email: bbs@bittium.com or
medical.support@bittium.com

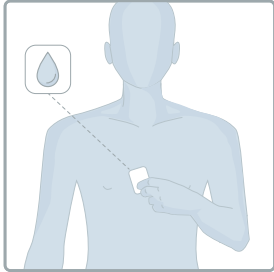
www.bittium.com

Bittium MiniSnap™ Sensitive 1-CH ECG Electrode

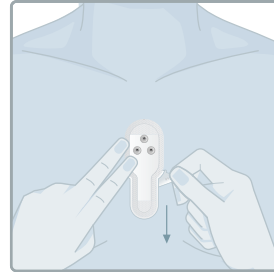
Quick Guide



Bittium

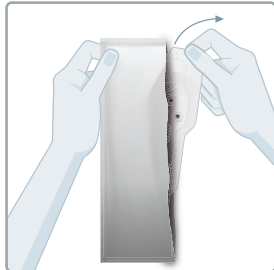
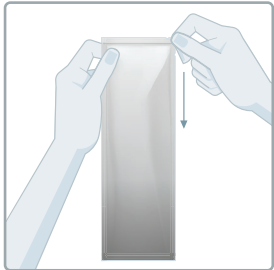


1. Clean the skin according to the instructions given by your clinic or the person responsible for treatment. The skin should be clean and dry when attaching the electrode. If needed, remove excess body hair using a razor or an electric shaver.

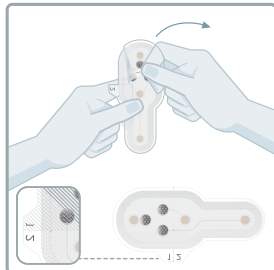


5. When the top of the electrode is properly attached, remove the liner (marked as number 2) from the bottom and attach the rest of the electrode onto the skin.

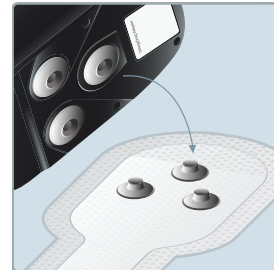
2. Make sure the electrode pouch is unopened and check the date before use. Tear open the pouch and remove the electrode.



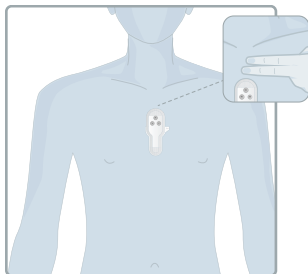
6. Make sure the surface of the Faros device and OmegaSnap adapter are undamaged*. Connect Faros device to the adapter. Attach adapter to the electrode. Press the device against the electrode to make sure the snap fasteners are connected.



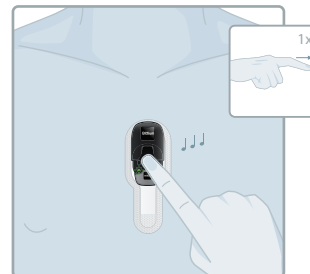
3. Remove the plastic liner (marked as number 1) of the electrode. Do not touch the adhesive surface with fingers.



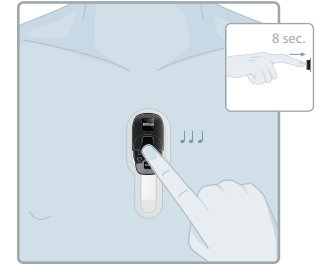
4. Fix the electrode onto the skin. Place the top of the electrode approximately two fingers' width below the suprasternal notch. Optimal signal quality is obtained when the electrode is fully placed on top of the thorax and the bottom of the electrode is clearly above the diaphragm.



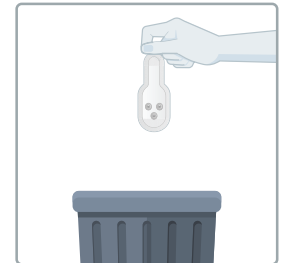
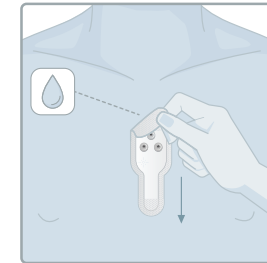
7. Press and release the power button to start measuring. A sound and blinking green light indicate that measurement has started.



8. When you want to end the measurement, press and hold the power button for approx. 8 seconds. The device beeps three times and the blinking light turns off.



9. Remove the electrode off the skin by peeling back an edge of the patch and then gently pulling off the rest of the patch. You can use mild soapy water if necessary. Dispose of the used electrode in accordance with local waste management practices. Return the Faros ECG device and the OmegaSnap adapter to your clinic or person responsible for treatment.



Symbols

CE mark	Do not reuse
Manufacturing date	Lot number
Manufacturer	Use-by date
Follow instructions for use	Prescription use only**
Medical Device	