

JOT automation

*Interim Report
January-June 2001*

August 2, 2001

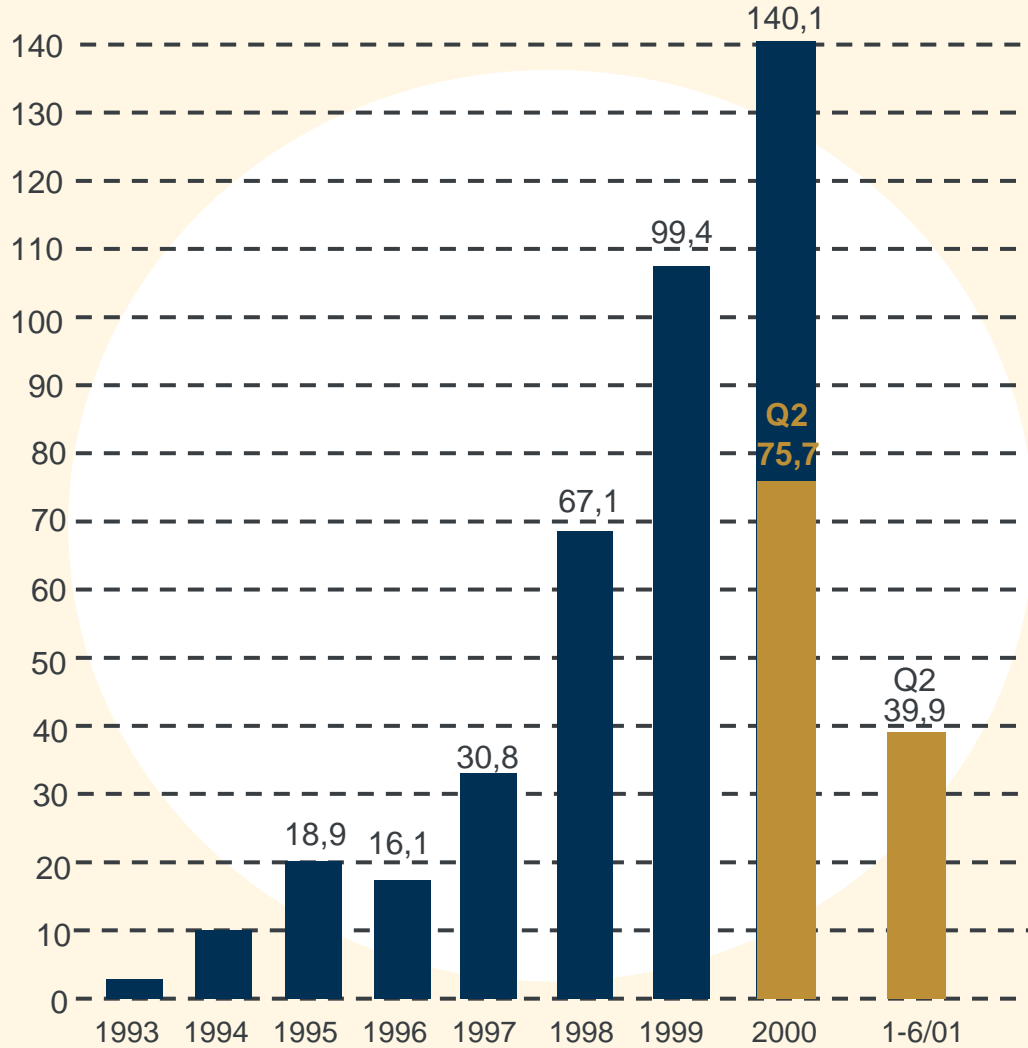
*Teijo Fabritius, President
JOT Automation Group Plc.*

Key Figures

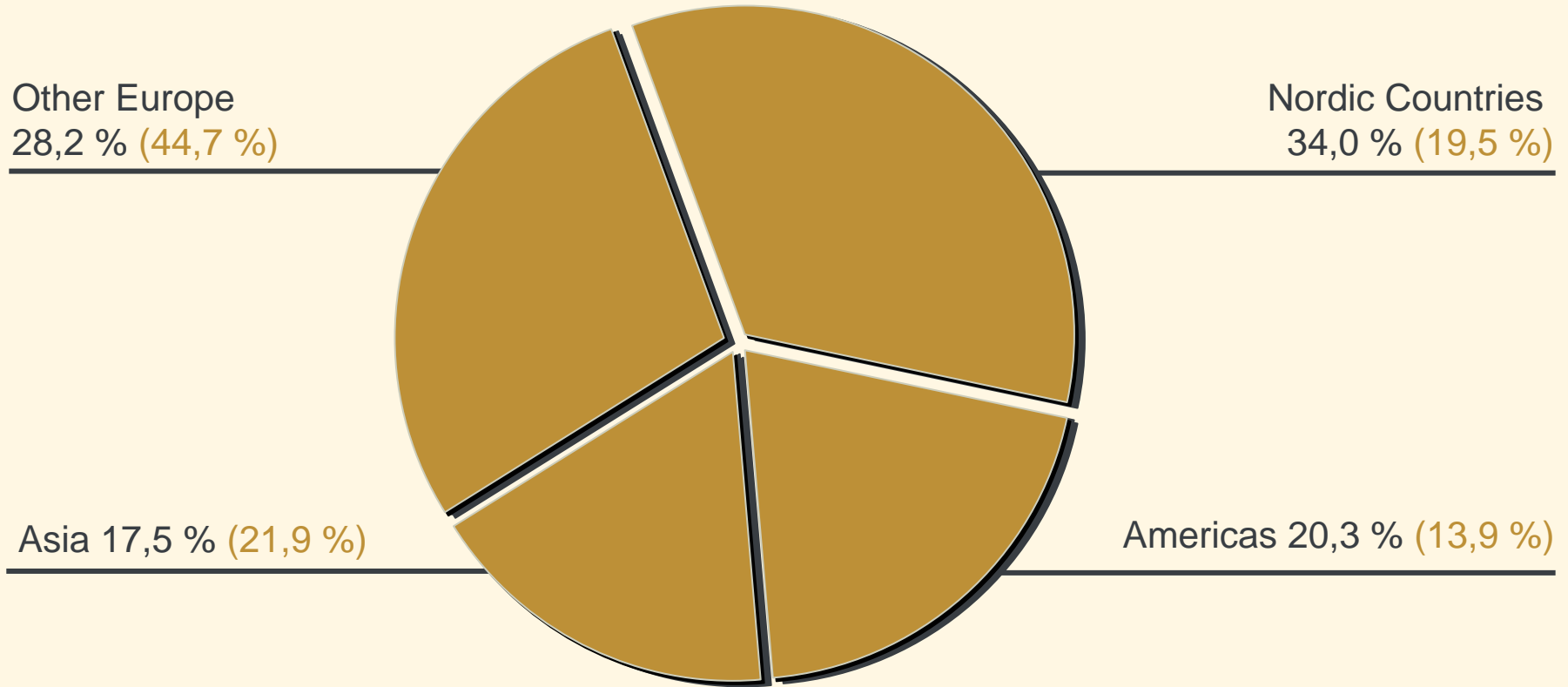
<i>Mill. EUR</i>	1-6/01	1-6/00	Change,%	2000
Net Sales	39,9	75,7	-47,3	140,1
Operating profit	-10,4	10,2	-202,1	14,1
Operating profit, % of net sales	-26,0	13,4		10,0
Profit before taxes	-9,4	9,2		13,1
Profit before taxes, % of net sales	-23,6	12,1		9,4
<hr/> <i>EUR</i> <hr/>				
Earnings / share	-0,05	0,04		0,06
Equity / share	0,19	0,20	-5,7	0,22

Net Sales January - June 2001

Mill. EUR

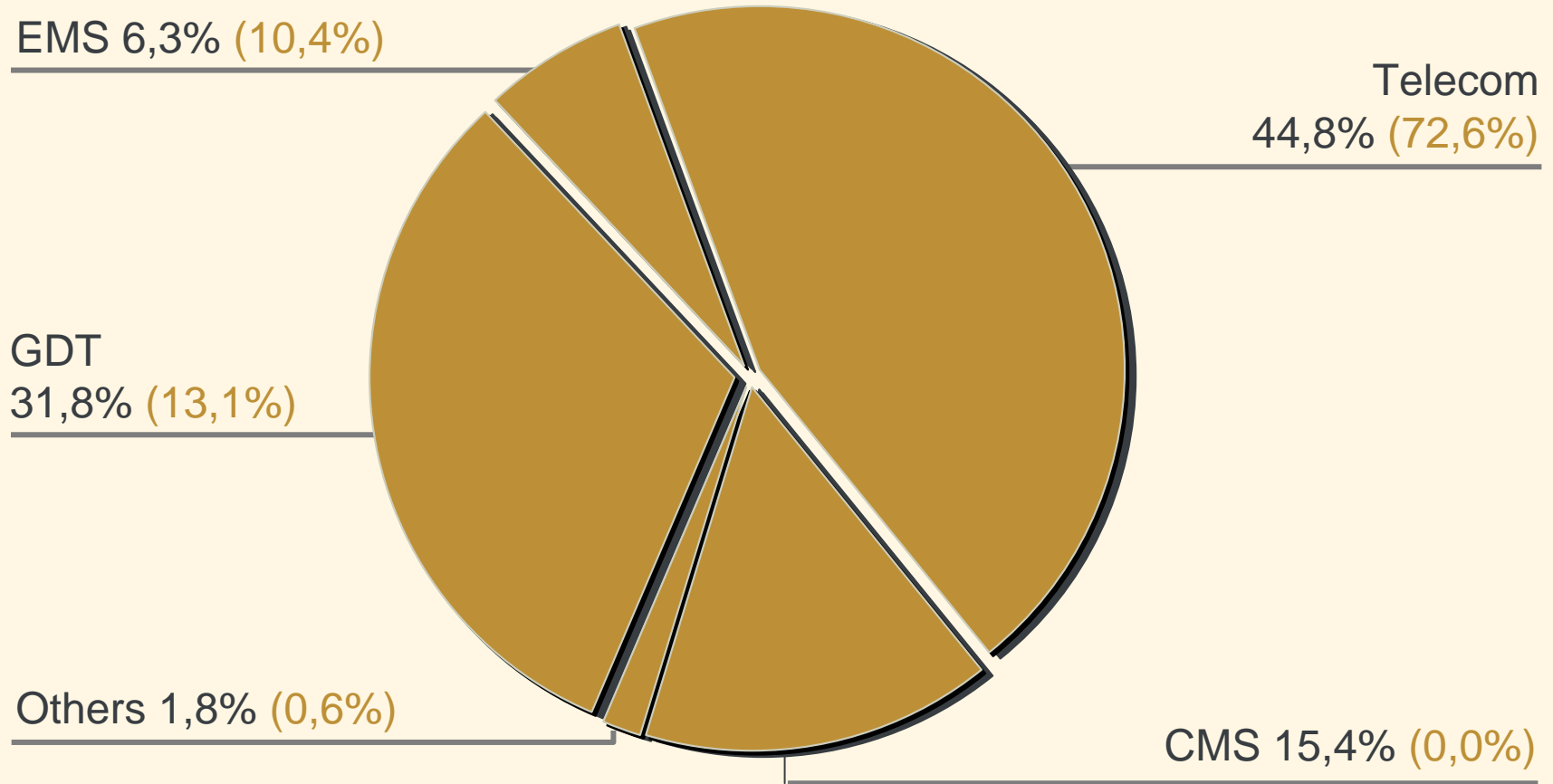


Net sales by market area January - June 2001



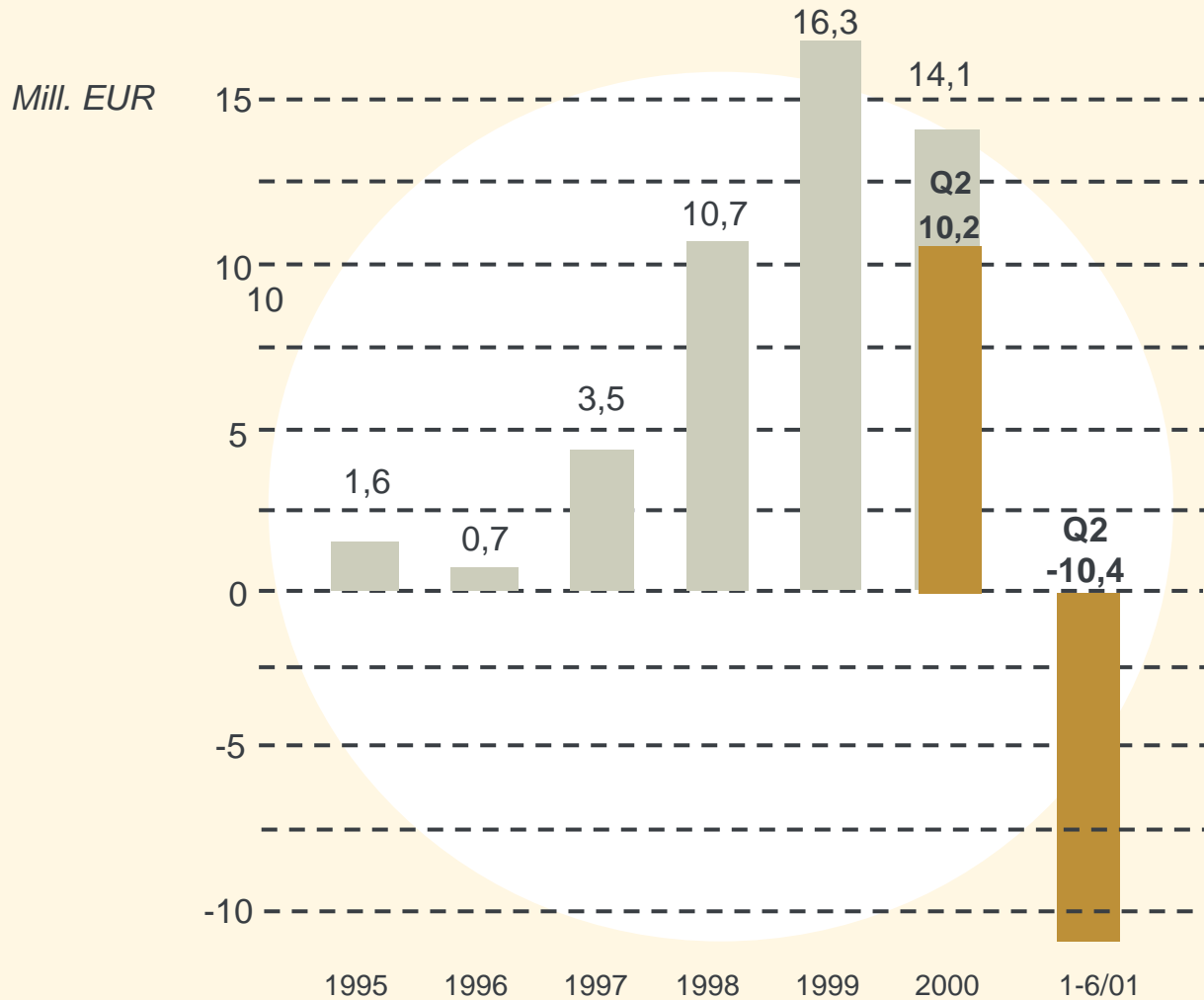
Net sales by market area January - June 2001 (Net sales by market area January - June 2000)

Net sales by customer segments January – June 2001



Net sales by customer segments January - June 2001 (Net sales by customer segments January - June 2000)

Profitability



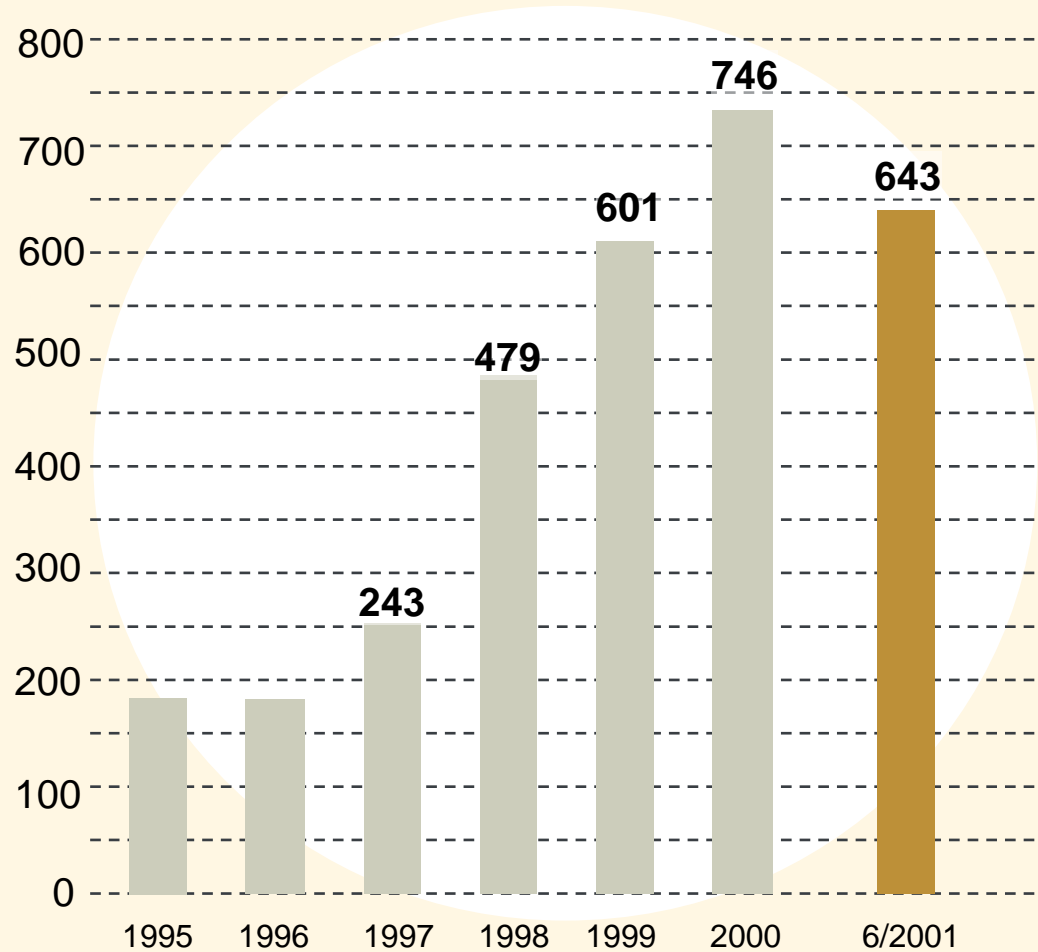
Key Figures

	1-6/01	1-6/00	2000
Return on equity, % (ROE)	-19,4%	37,1%	28,2%
Return on investment, % (ROI)	1,1%	40,4%	29,5%
Interest-bearing net liabilities, mill. EUR	13,3	10,7	4,3
Net Gearing, %	39,6%	31,6%	11,2%
Equity ratio, %	42,0%	40,9%	47,5%

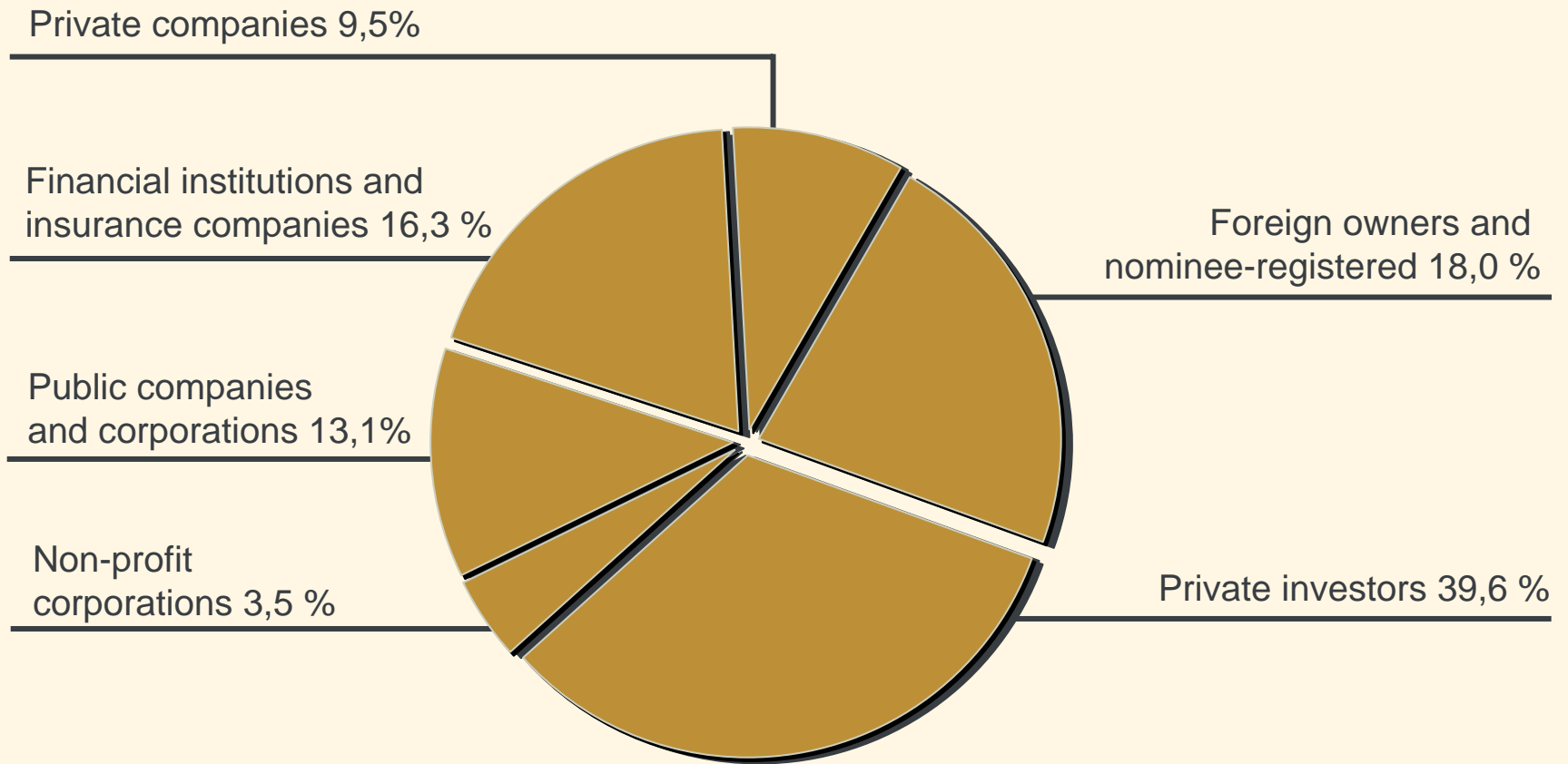
Key Figures

	1-6/01	1-6/00	2000
Gross investments in, mill. EUR	11,5	3,2	6,9
Gross investments in, % of net sales	28,9%	4,2%	4,9%
R & D costs, mill. EUR	3,2	4,4	7,9
R & D costs, % of net sales	7,9%	5,9%	5,6%

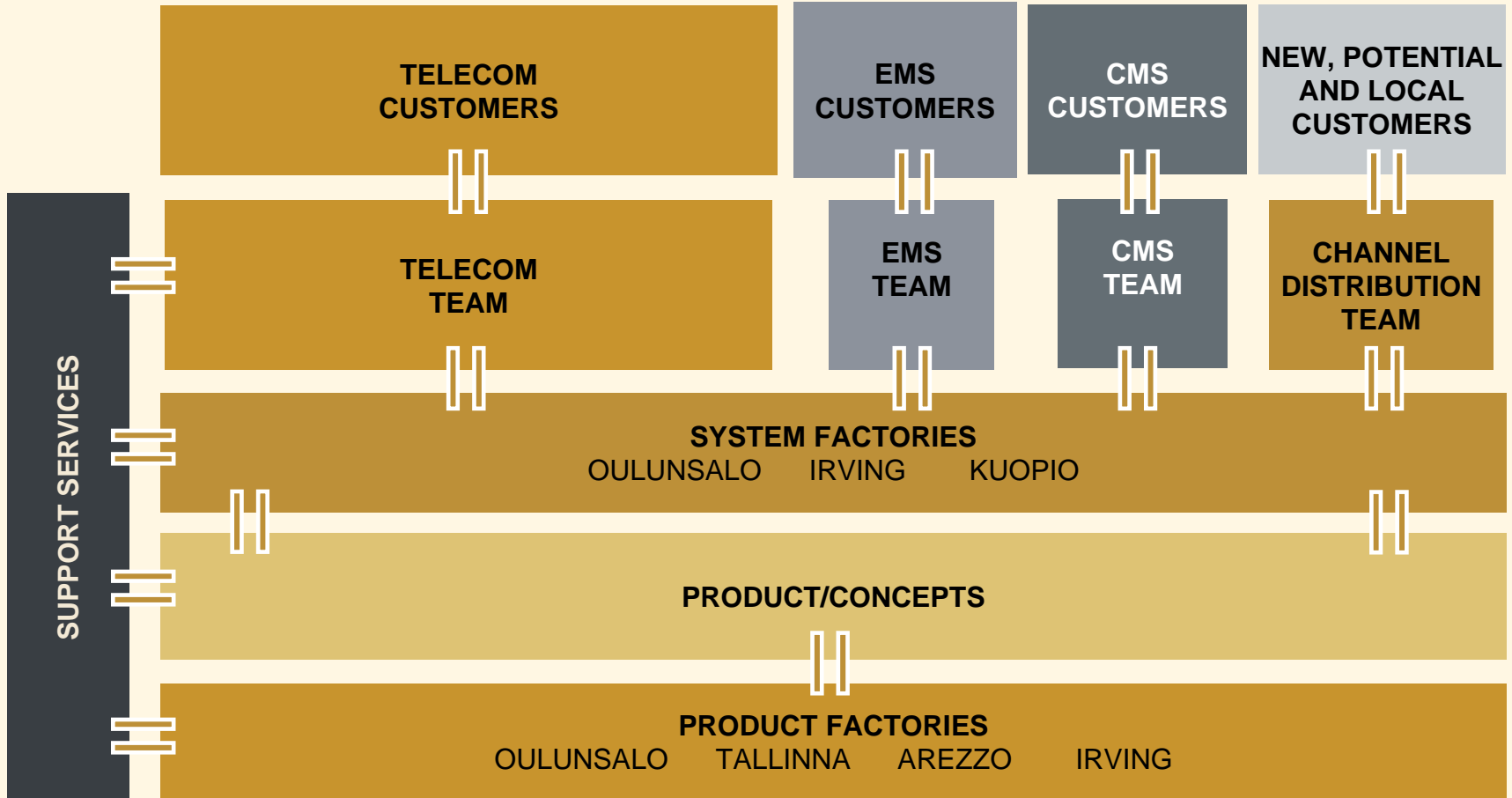
Personnel



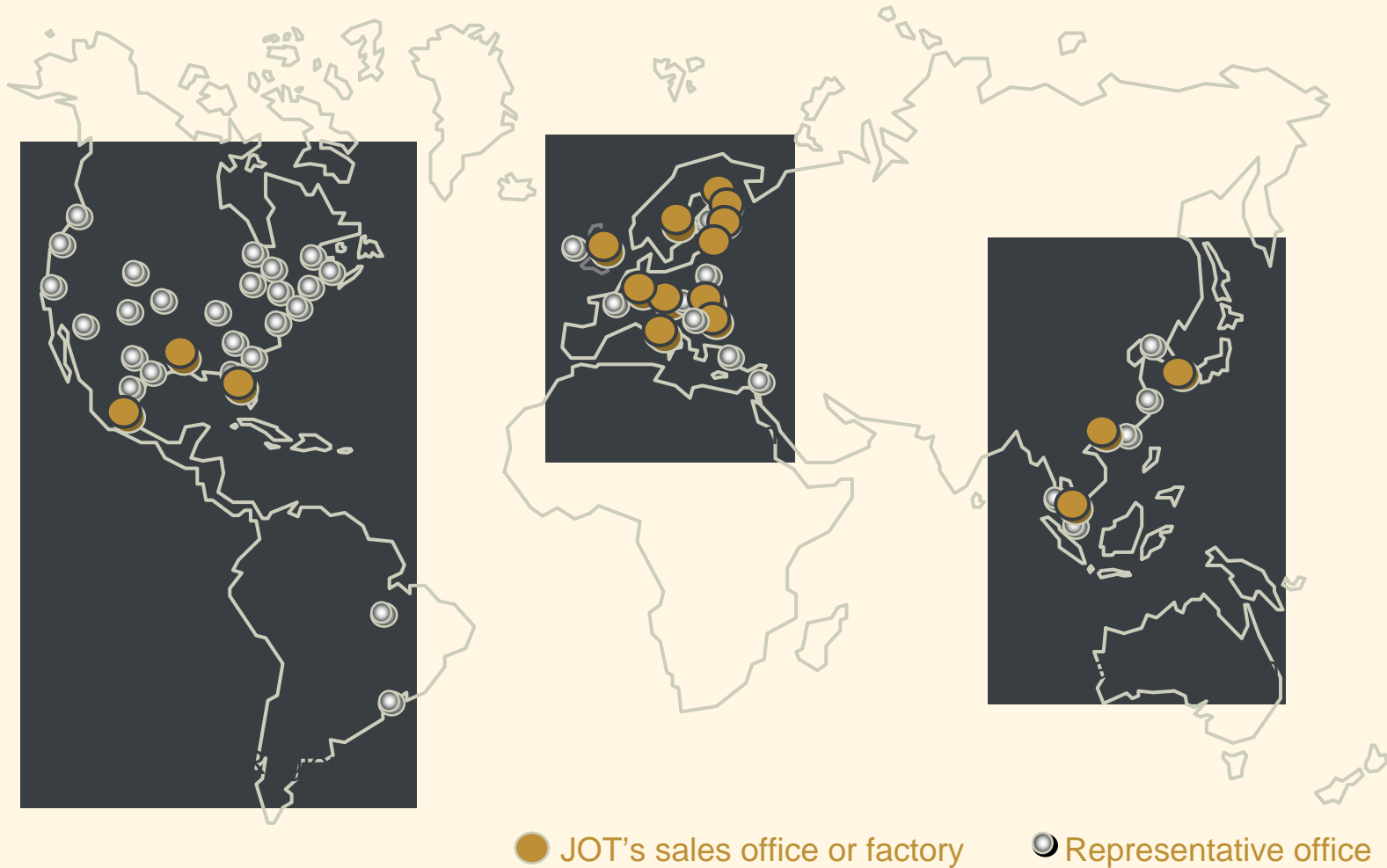
Ownership June 30, 2001



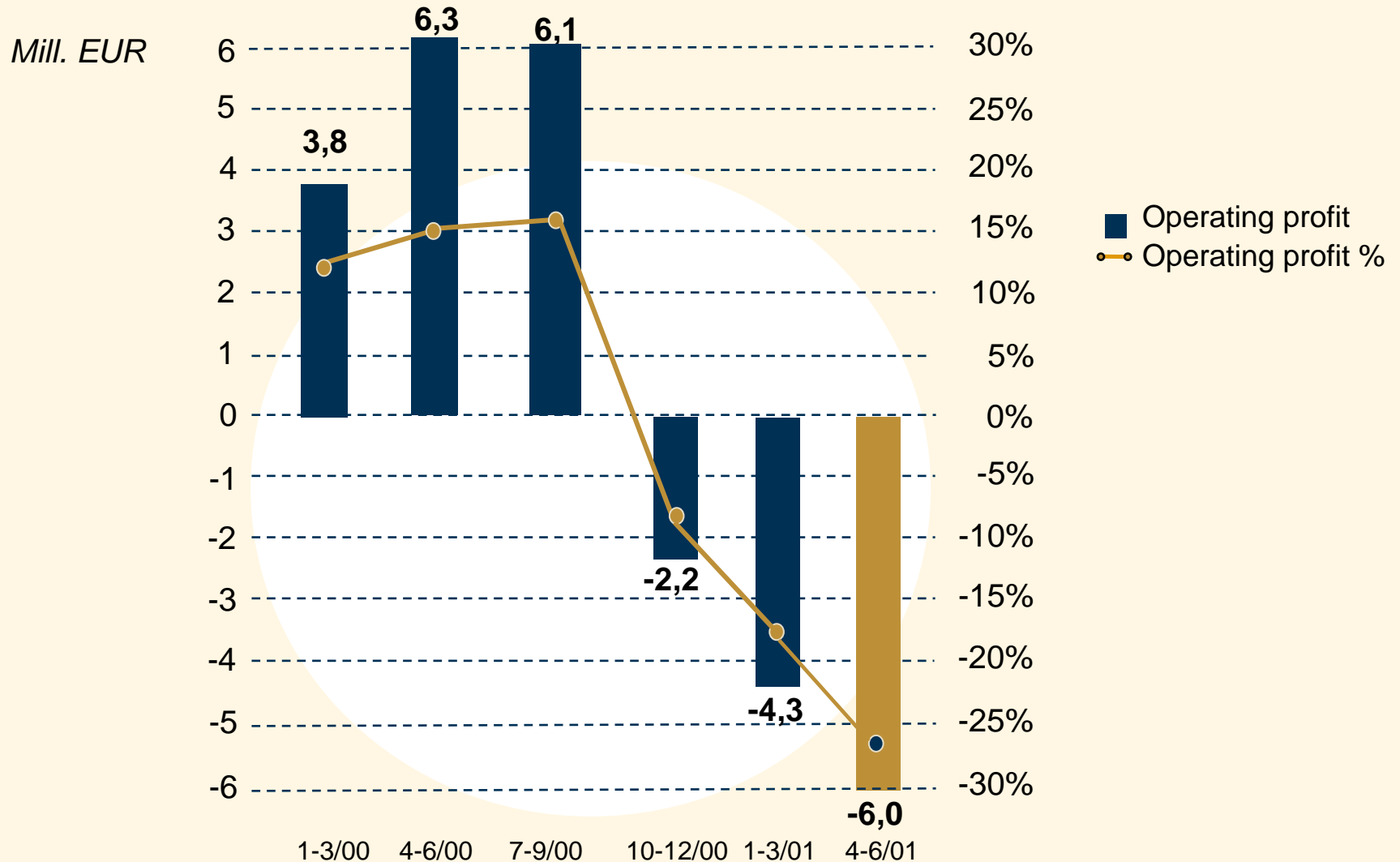
JOT Automation Group's Operational Structure



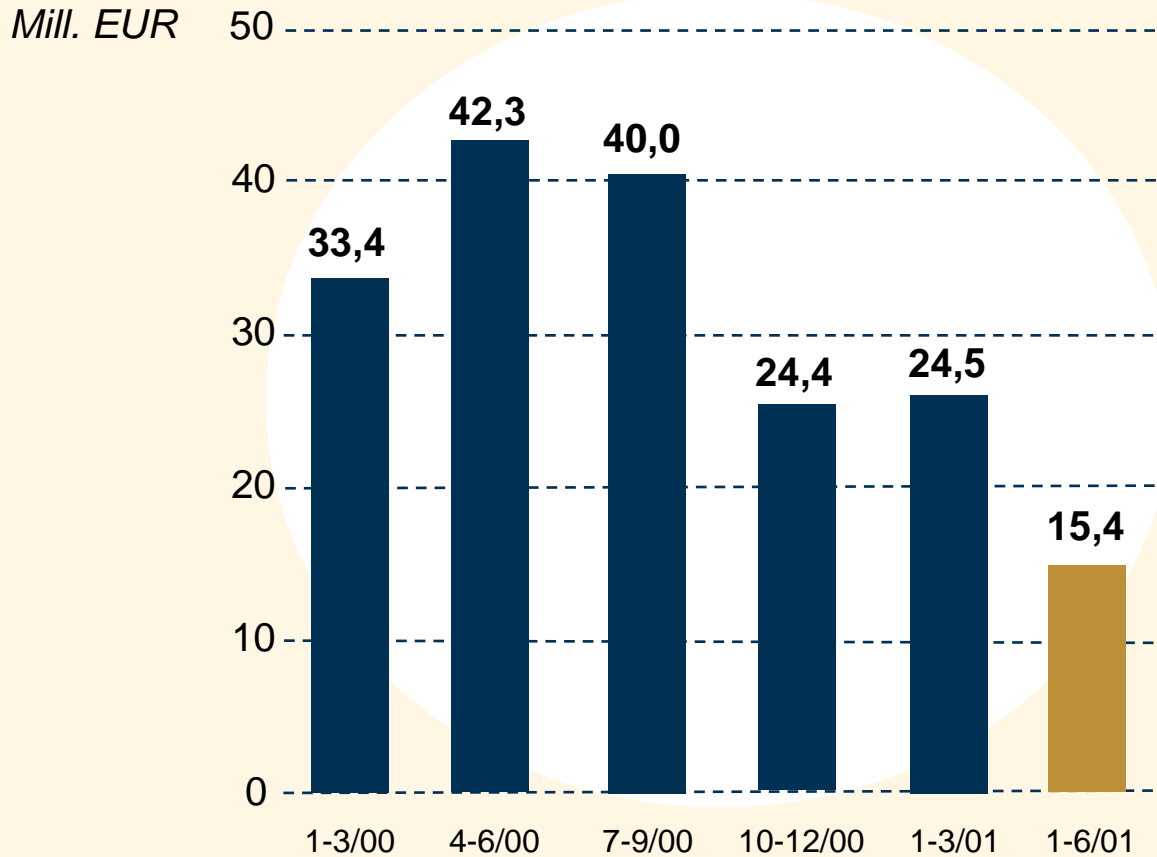
Global Network



Quarterly Profitability 2000-2001



Quarterly Net Sales 2000-2001



Share Price January-June 2001

<i>EUR</i>	1-6/2001	1-6/2000
Highest	2,75	13,11
Lowest	0,49	4,60
Average	1,26	8,87
Closing	0,53	6,99
Market capitalisation (mill.)	94,5	1 192,6
Trading value of shares, mill. EUR	212,7	1127,6
Number of shares traded	168 213	127 148
Related to average number of shares, %	95,9	74,5
<i>Adjusted number of shares</i>	6/2001	6/2000
At the end of the period	178 251 708	170 617 200
Average for the period	175 367 097	170 617 200

Largest Shareholders June 30, 2001

Largest shareholders with the exception of owners of the nominee-registered shares	Number of Shares	% of Shares
Terentjeff Jorma, Member of the Board	9 002 983	5,1
Tapiola General Mutual Insurance Company	5 086 000	2,9
Ilmarinen Mutual Pension Insurance Company	4 815 700	2,7
Varma- Sampo Mutual Pension Insurance Company	2 633 909	2,6
Tapiola Mutual Pension Insurance Company	2 702 300	1,5
Kettula Mika, Chairman of the Board	2 262 340	1,3
Finnish National Fund for Research and Development, Sitra	2 099 250	1,2
Evatec Ltd	2 000 000	1,1
LEL Employment Pension Fund	1 794 700	1,0
Svenska Handelsbanken AB	1 751 109	1,0
Foreign-owned and nominee-registered shares	32 053 825	18,0
Shares owned or controlled by the Members of the Board and by the President of JOT Automation Group Plc.	11 315 323	6,4

The President of the Company holds 102,750 option rights, which entitle to subscribe for 288,000 shares.

UDF AUTOMATION

